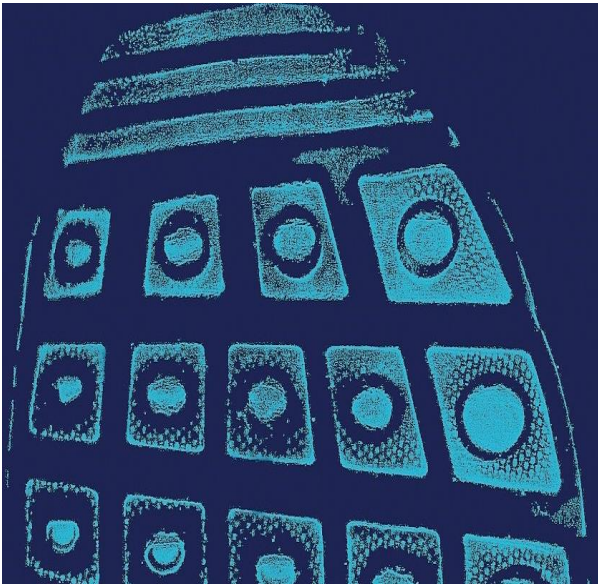


Chemistry Training

Footwear Enhancement

Course

- Three-day intensive course run at Alecto's laboratory and training facility in Watchfield and delivered by qualified instructors
- Designed for forensic scientists, crime scene investigators, managers and other related police professionals
- Provides a comprehensive overview of the techniques available to enhance footwear marks both at a scene or in the laboratory
- Participants must supply their own full facemask which will be tested prior to the commencement of the course to ensure proper fitment



Structure

- A pre-course briefing pack will be provided
- The course is presented through lectures, interactive classroom discussions, and indoor and outdoor practical exercises
- Participants will receive a comprehensive folio of training materials
- The course includes a number of assessed activities and certificates of satisfactory completion will be awarded

Content

- Provides a comprehensive overview of mark enhancement techniques using photography, light sourcing, physical enhancement and chemical enhancement
- Practical exercises will allow participants to be trained in the use of these various techniques
- Considers the enhancement of footwear marks in blood and environmental substrates
- Covers the importance and value of footwear mark enhancement and its contribution in a major crime investigation

Outcome

- Understand the health and safety issues associated with chemical enhancement and the necessity for the use of appropriate PPE
- Evaluate footwear marks and enhance them using various chemical and physical techniques